



National Preservation Conference 2006

**Carnegie Libraries: Challenges and Solutions**  
Planning for the Next 100 Years

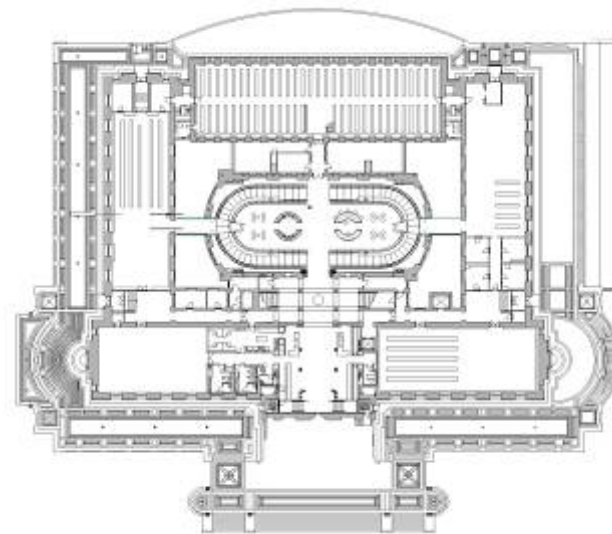
Joe Rizzo, AIA, ALA

**Hillier** ARCHITECTURE

## Planning for the Next 100 Years

### How to save Carnegie Libraries **as libraries**

- Cultural & Civic Contributions
- Typical Design Features – Pros & Cons
- Planning Challenges & Opportunities
- Case Studies/Solutions



# Why save them as Libraries?

- Represents responsible stewardship
- Conserves our architectural heritage and the history of American libraries
- Avoiding use change offers positive code implications



Hanley Library, Winchester, VA  
Restoration Design by Dennis Kowal Architects



# Cultural & Civic Contributions

## Image, Identity & Impact

- Response to The Gilded Age & City Beautiful Movement
- "The Poor Man's University"
- An architectural statement for American cities and the American Century
- Yet also often the most important building in our smallest communities



Restoration by Davis Brody Bond





## Cultural & Civic Contributions

### As an Urban Planning/Design Element

- Saving distinguished older buildings eases our transition into the future
- Public libraries are proven catalysts for commercial & neighborhood redevelopment
- They serve a broad spectrum of the community



# Typical Design Features – Pros and Cons

## Location, Location, Location

Often built in prestigious places, that once prestigious site may now be:

- In a failing city – Improve security, add parking & create a destination
- Or in a thriving city facing aggressive development pressures – Pitch as a calming urban oasis & lunchtime, evening & weekend traffic generator (public/private partner); sell air rights etc.
- Foster public transit links and complimentary collateral development



# The Biggest Challenge is Change

**"That was then, this is now"**

Practically all Carnegie Library design objectives are polar opposites of today's

## Exterior Elements

- Monumental scale & formality vs. Unimposing & welcoming
- Solid & inward focused vs. Open transparent marketing approach



Princeton Public Library by Hillier Architecture



# The Biggest Challenge is Change

**"That was then, this is now"**

## Exterior Elements

- Massive steps vs. ADA access
- Classic aphorisms & "dead white guys" vs. Multiculturalism
- Unfortunate later additions – Demolition or adaptive reuse?





# The Biggest Challenge is Change

**“That was then, this is now”**

## Interior Programming & Planning

- Multi-storied, compartmentalized & symmetrical vs. Open, flowing, easy-to-monitor plans
- Formal reading rooms with built-in shelves vs. Flexible changeable space
- Multi-tier “paged” stacks vs. Open public access to collections



# The Biggest Challenge is Change

**"That was then, this is now"**

## Interior Programming & Planning

- "Upstairs Downstairs" approach to popular collections vs. Borders Books & Starbucks mentality
- Original focus on community spaces remains relevant but challenged by new mix of functions & technologies
- Addressing additional space requirements – Libraries grow!



# The Biggest Challenge is Change

**"That was then, this is now"**

## Growth Strategies

- Expand current location – on existing and/or adjacent site (above or below ground)
- Compress – moveable compact, mezzanine levels, and ASRS
- Divide & Conquer like NYPL – research, admin. processing & off-site storage / arts, music, science & business venues



Newark Public Library



University of Louisville, Ekstrom Library by Hillier Architecture



# The Biggest Challenge is Change

**"That was then, this is now"**

Built with enduring, high-quality materials & finishes that require significant expertise & investment to maintain – the best strategies:

- Early conservation to,
- Limit need for restoration & repair and,
- Minimize costly & disruptive reconstruction/replacement
- Combine historic preservation & new program/modernization work



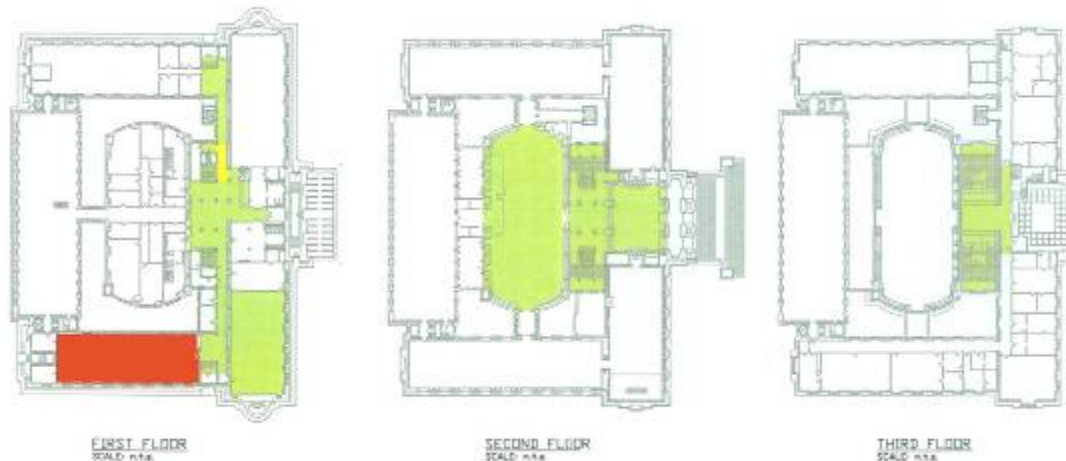


# The Biggest Challenge is Change

**"That was then, this is now"**

## Performance Based Code Analysis

- Smoke/fire modeling analysis
- Lateral loads/seismic forces
- Minimize visual impact of fire suppression, emergency lighting & signage and energy & increased ventilation requirements



Fire Smoke Migration Study

# The Biggest Challenge is Change

**"That was then, this is now"**

## Obsolete Systems vs. New Demands

- Ancient hard-to-secure toilet facilities
- Hard-to-repair built-in storm drainage
- Beautiful but ineffective lighting
- Gravity heating or old ventilation systems without AC, and asbestos-laden pipes
- New power data & communications
- Sustainable design opportunities





## Case Study: St. Louis Public Library



### Vision

“A new model for 21<sup>st</sup> century library design within the magnificent Renaissance walls of Central Library” - Waller McGuire, Director

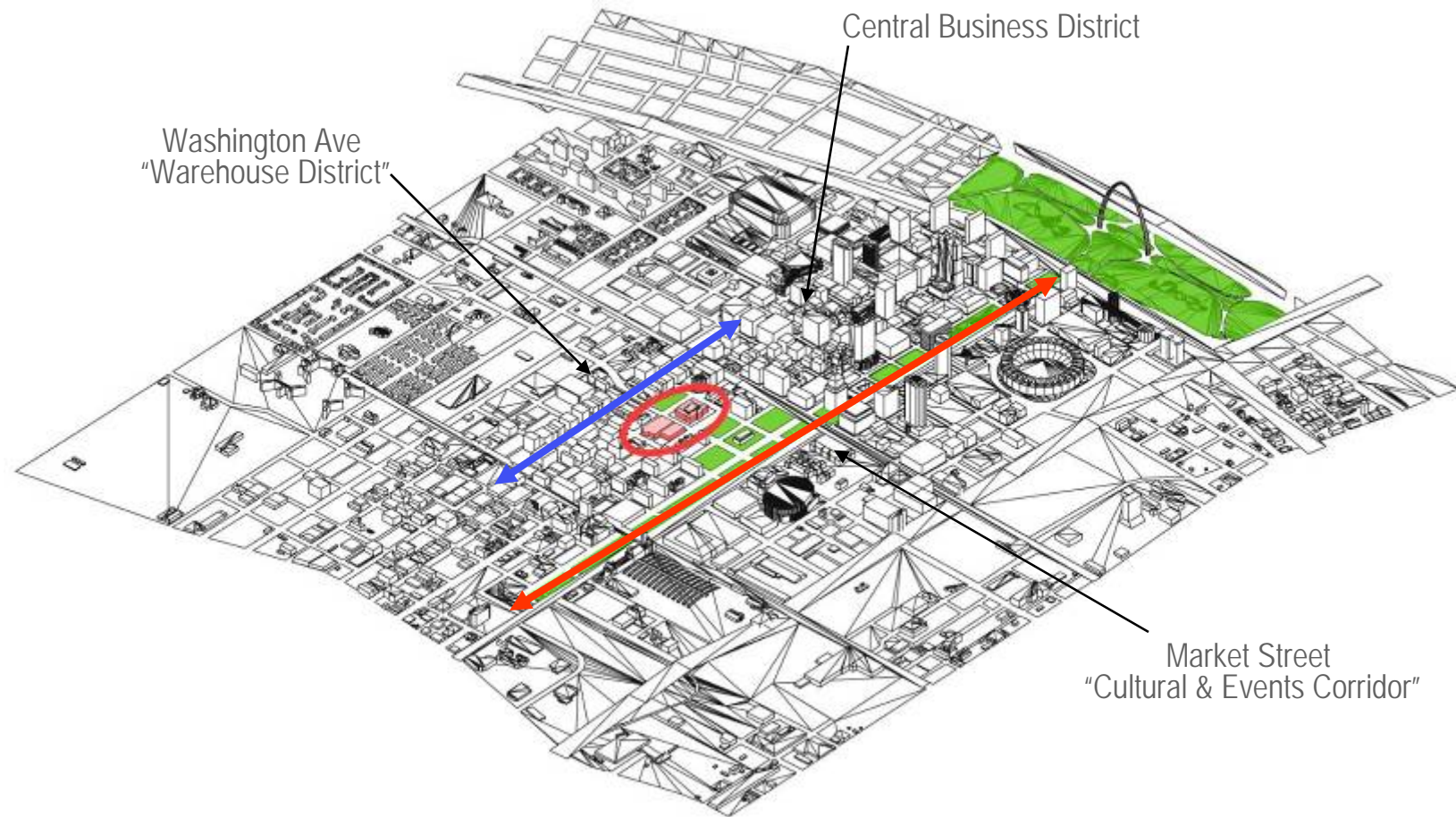
## Facility Master Plan

- Physical facility survey
- Code analysis
- Comprehensive building assessments



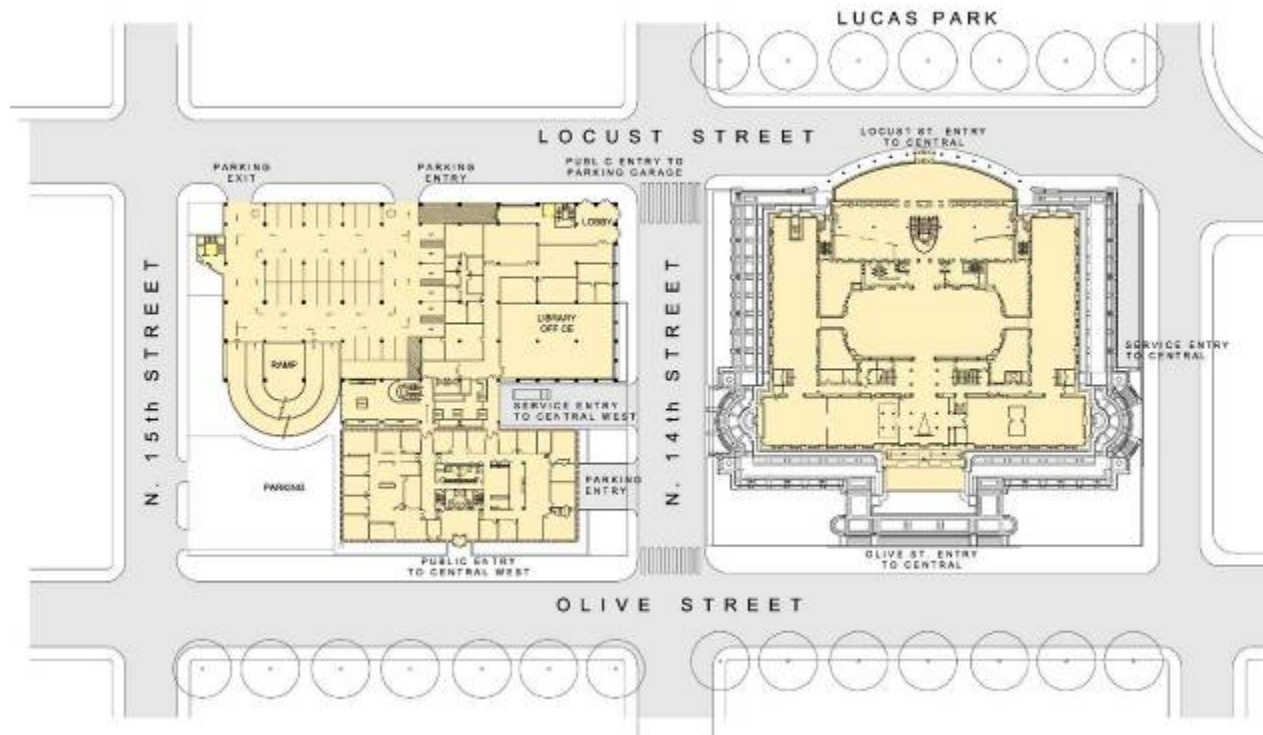


## Vision – The Library in the City



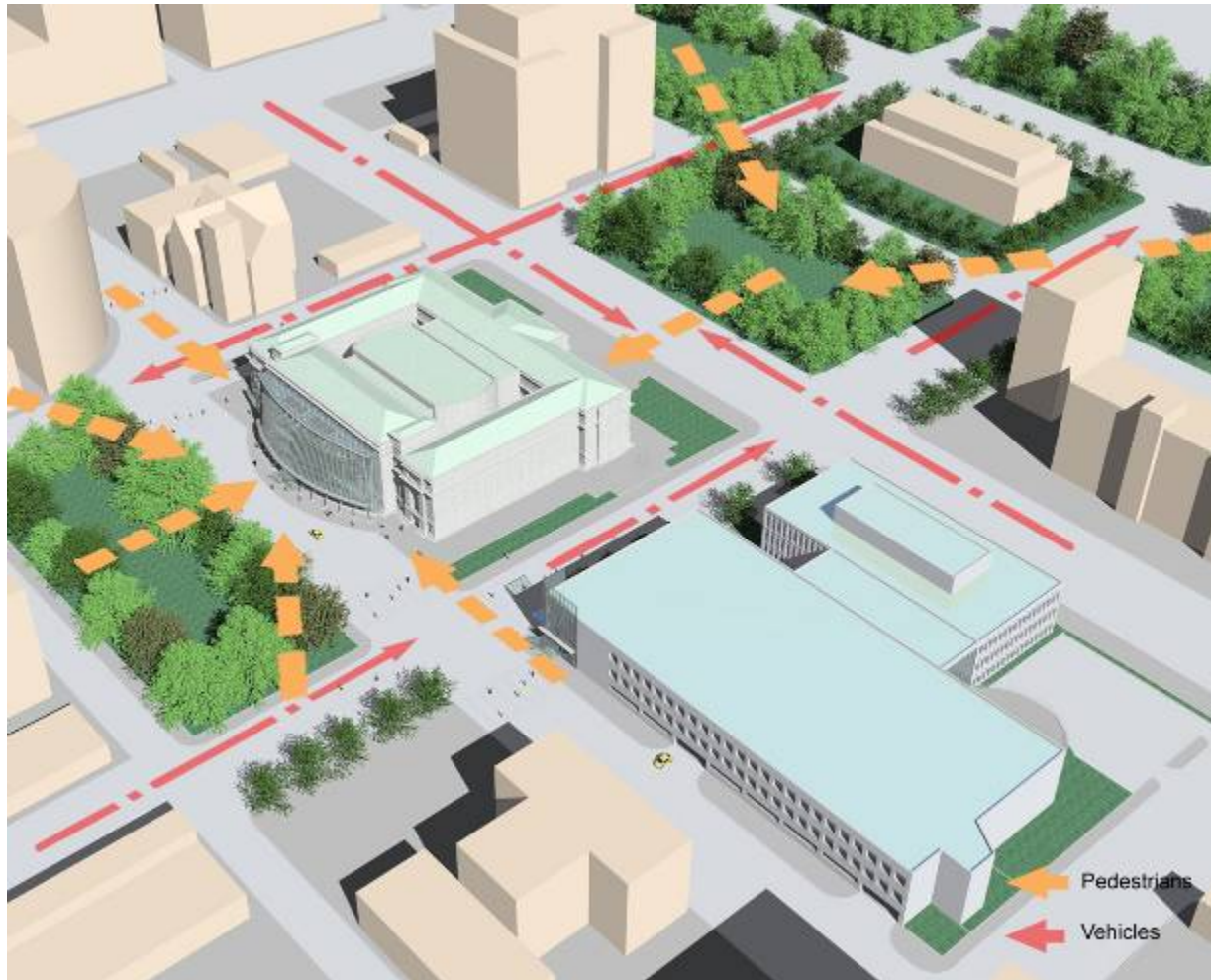
The reinvigorated library will be a popular destination experience that takes full advantage of its strategic location.

## Vision – Vital Crossroads Location – Neighborhood Anchor



- ▼ To Union Station, The St. Louis Symphony & Kiel Center
- To Tucker Avenue, Downtown & the Convention Center
- ◄ To St. Louis University, The Cathedral & Forest Park
- ▲ To the Children's Museum
- ▲ To new development on Washington Avenue, "The Warehouse District"

## Vision – Vital Crossroads Location – Neighborhood Anchor



At the crossroads of Olive Street and N. 14<sup>th</sup> Street, the library will be an anchor for on-going redevelopment of the surrounding neighborhoods.



## A Bold Yet Cost-Conscious Plan for the Future

Costing about **one third** that of similar projects across the nation, the St. Louis Public Library will provide remarkable benefits for the public through the strategic use of three existing central facilities – Central, Central West, and Compton.

The primary goal is to make **Central** a world-class urban library, focused on public service, providing access to high-quality collections, programs and special events.

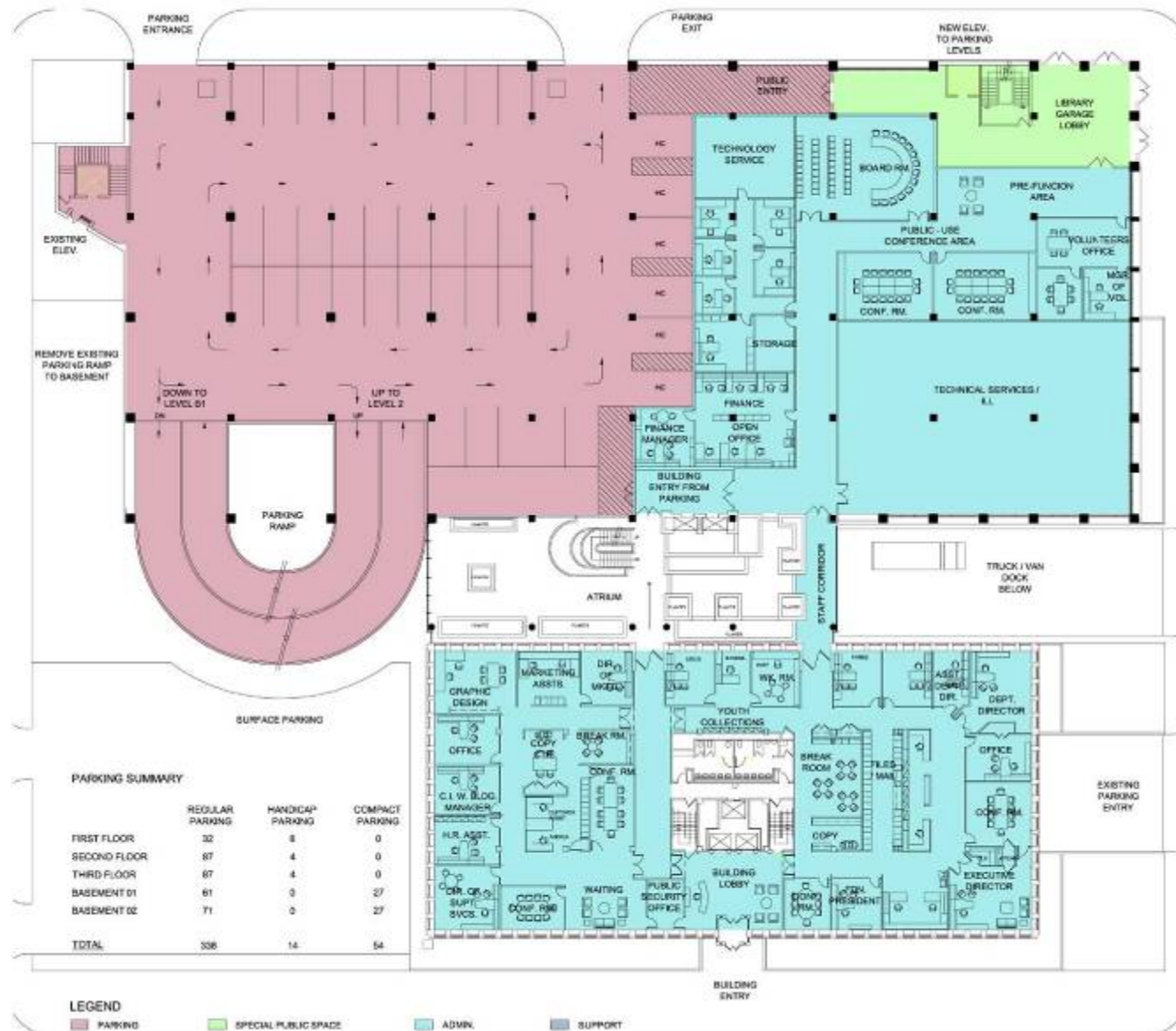


## A Bold Yet Cost-Conscious Plan for the Future

In the new plan, Central West will provide three important functions:

- Free up large areas of Central through the relocation of library departments not directly associated with public service.
- Provide safe and convenient parking for over 300 cars - vital to attracting visitors from throughout the city and surrounding region.
- Continue to provide an income stream by leasing office space to local businesses.

## Central West Floor Plans – First Floor



## A Bold yet Cost-Conscious Plan for the Future

**Compton** will be a conveniently close and highly effective bulk storage facility for the system's valuable, but less frequently used collections.

This will free up large areas of Central to meet future collection development needs and increased public use.



# The Prime Goal – Restoring and Transforming Central

The plan is to restore Central's historic spaces while dramatically improving its public service capabilities; transforming the facility by doubling the space available to its patrons.



THIRD FLOOR



SECOND FLOOR



FIRST FLOOR



BASEMENT



THIRD FLOOR



SECOND FLOOR



FIRST FLOOR



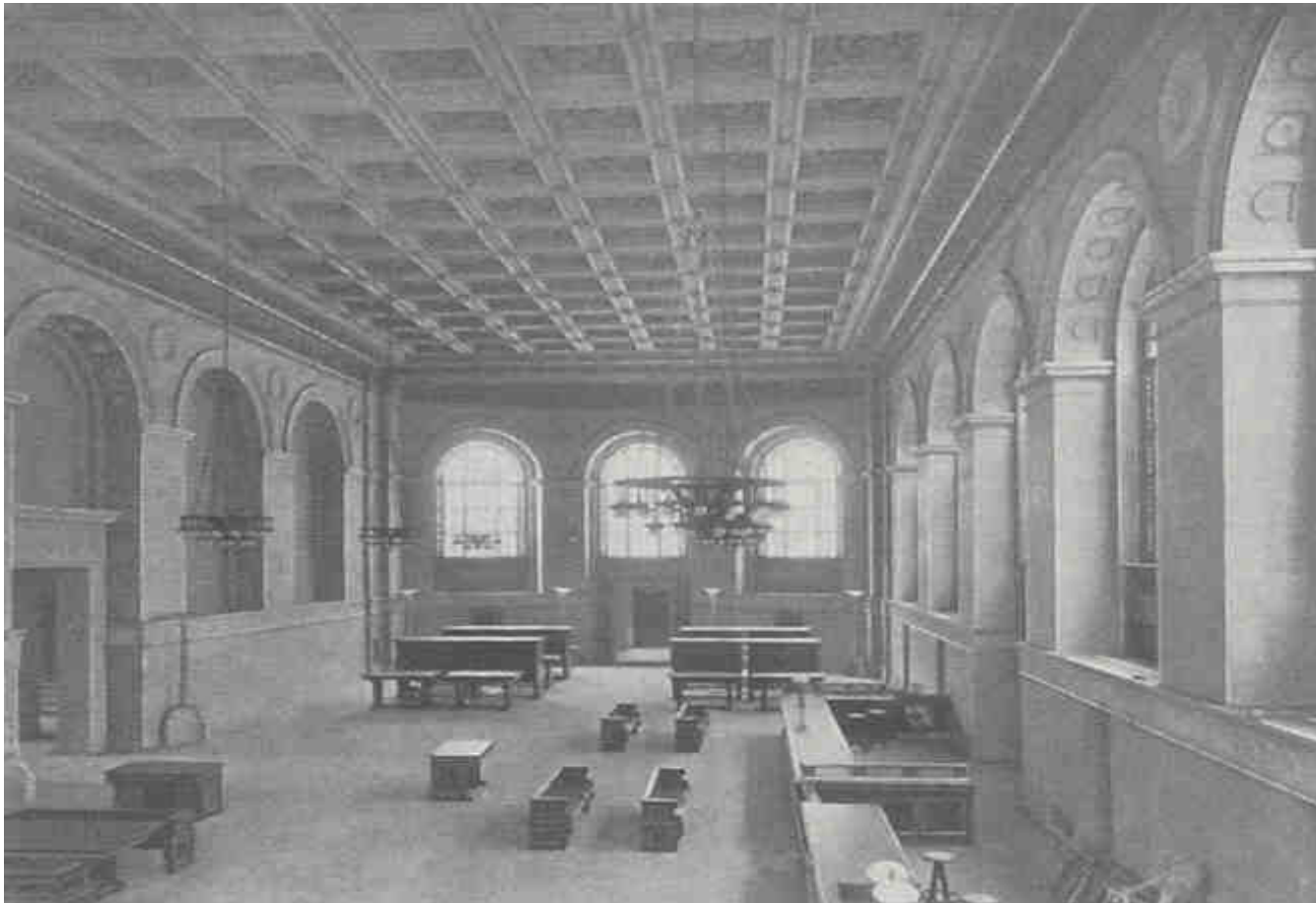
BASEMENT

Before

After



## Central's Planning Concept



The planning concept for Central is **based upon 6 simple, yet powerful goals:**

## Central's Planning Concept



Before



1. To restore and reinvigorate Central's wonderful historic rooms – to celebrate the past, protect its most precious resources and maximize research capabilities

# Central's Planning Concept



"New Center for the Reader"



2. To transform and repurpose Central's marginal office, support, mechanical and popular collections spaces to create a remarkable destination experiences for St. Louis.

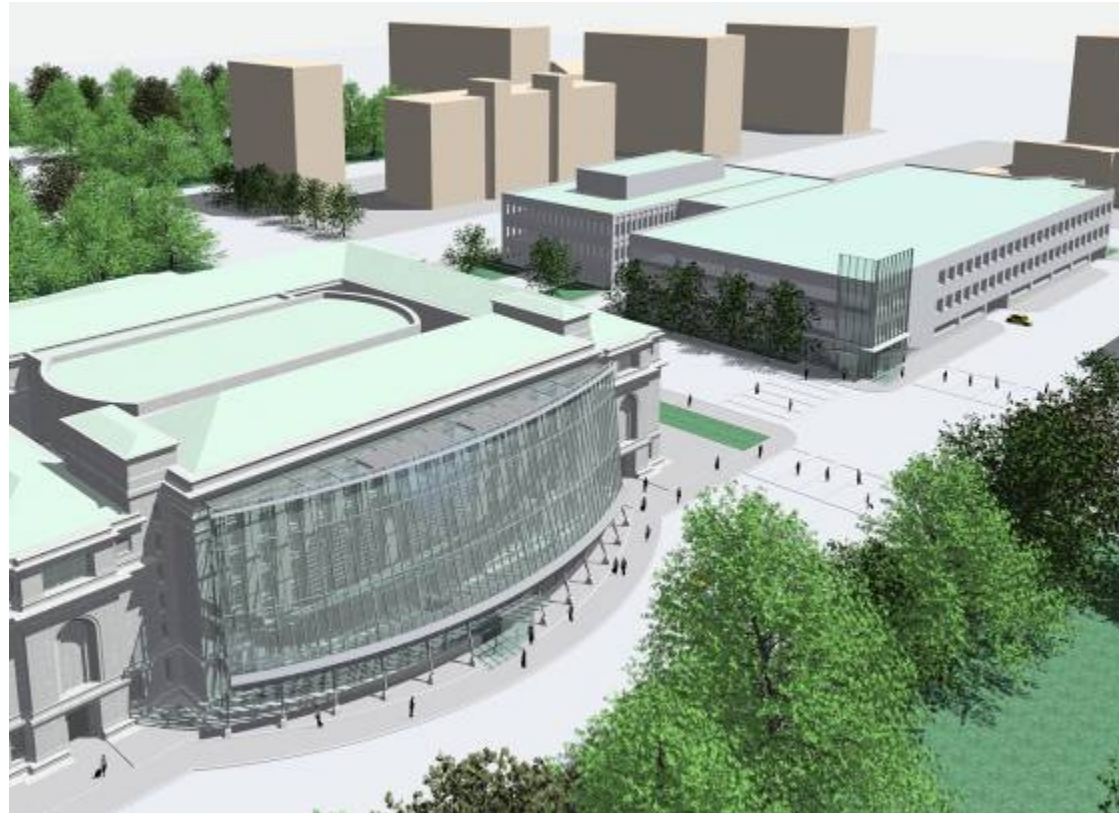


## Central's Planning Concept



3. To create a gleaming, crystalline north addition – to herald the transformation within, and make the library a more friendly and inviting beacon that actively engages with the city and surrounding Washington Avenue neighborhood.

## Central's Planning Concept



4. To provide enough safe and convenient parking to attract many more visitors from throughout St. Louis and the surrounding region.

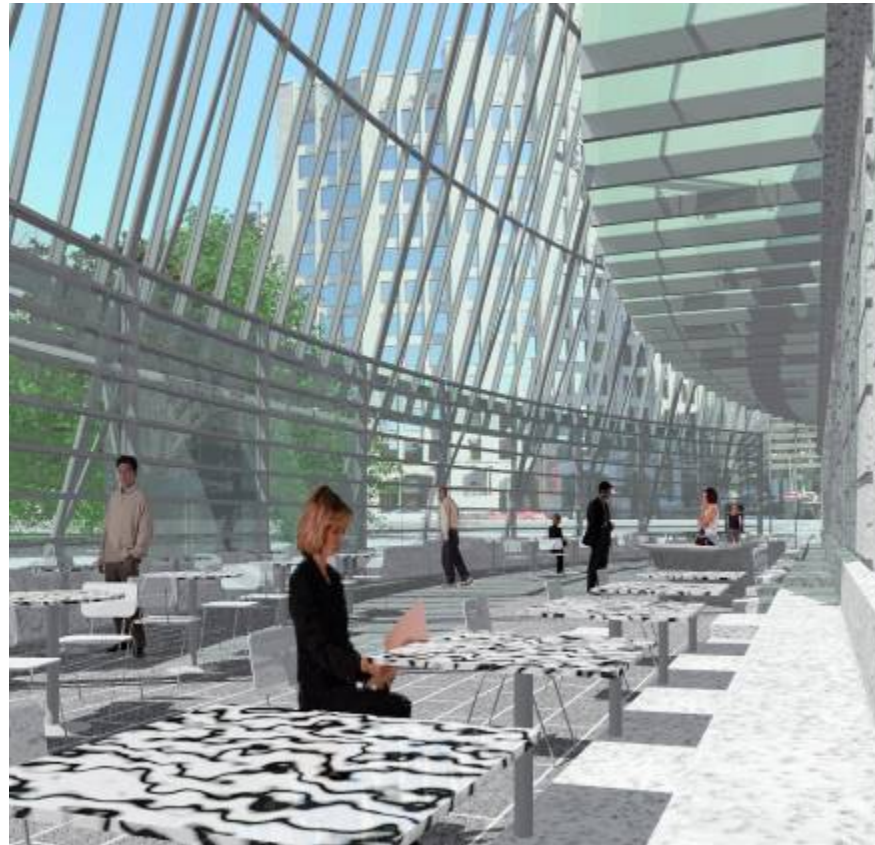
## Central's Planning Concept



5. To transform half the inaccessible book stack to active, public space.

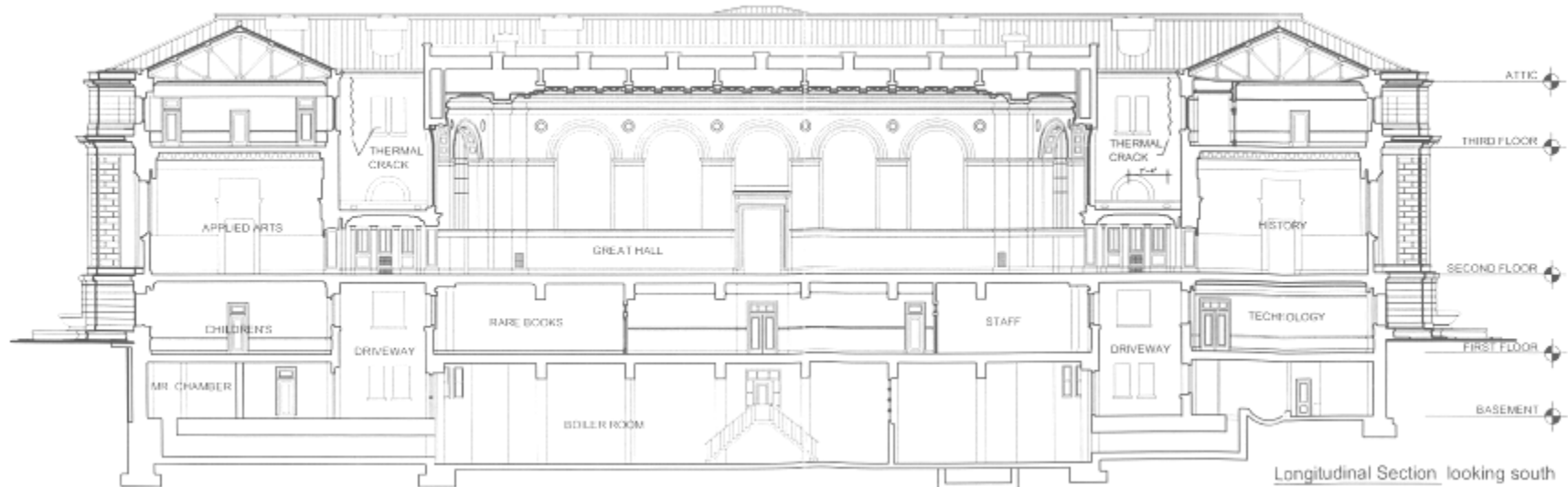


## Central's Planning Concept

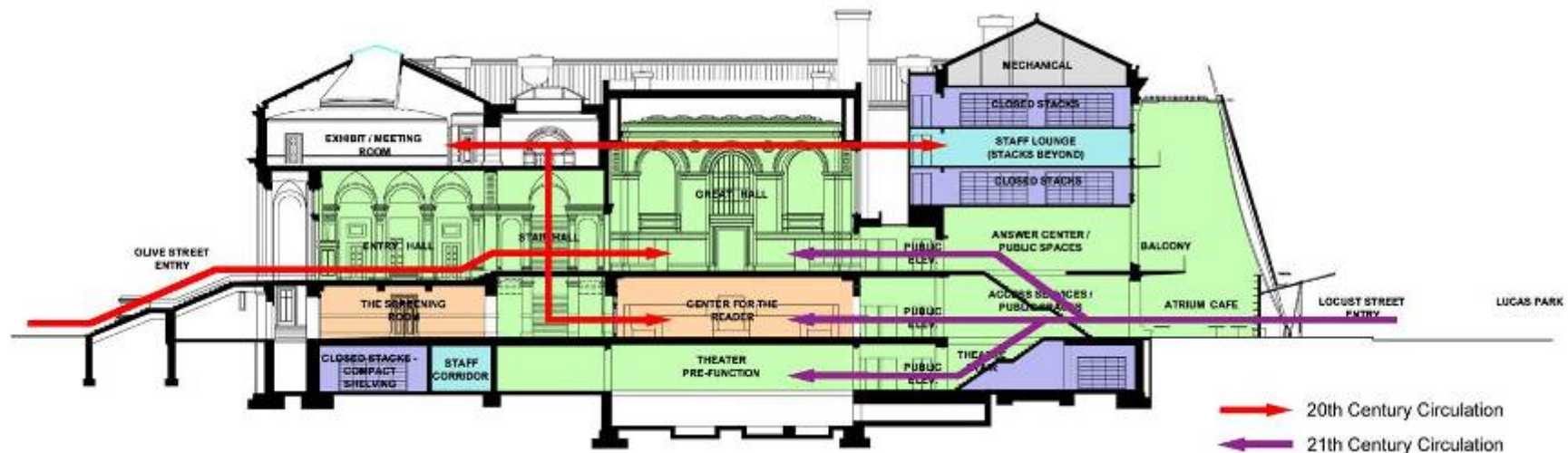


6. Create a new model for 21st century library design within the magnificent Renaissance walls of the Central Library.

# Linking the Glorious Past with an Exciting Future



# Linking the Glorious Past with an Exciting Future



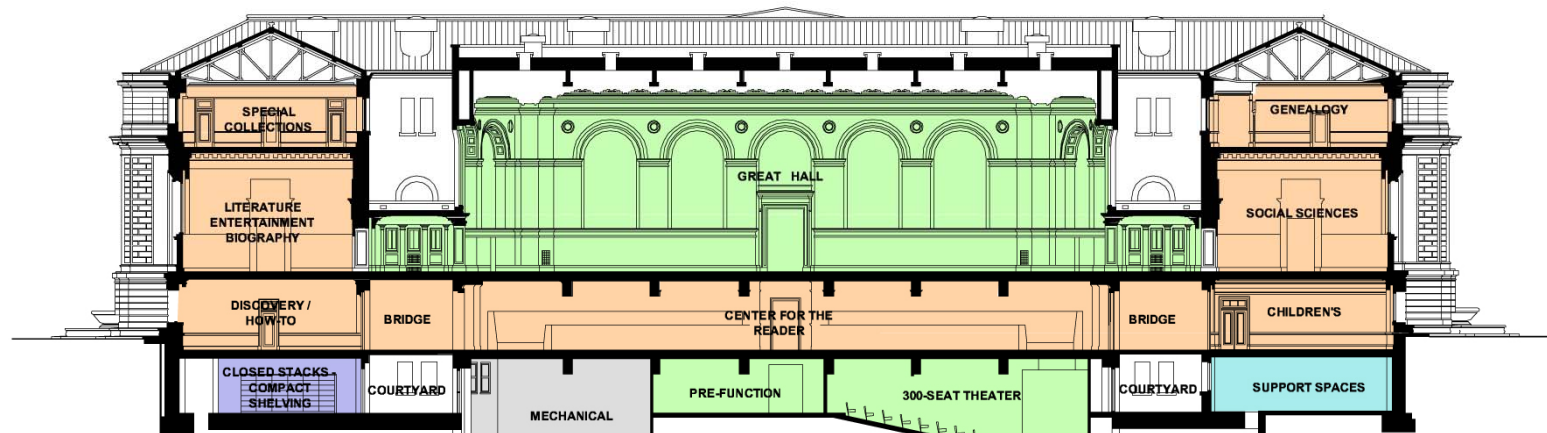
## LEGEND

■ COLLECTION   
 ■ SPECIAL PUBLIC SPACE   
 ■ ADMIN. / SUPPORT   
 ■ RESTROOMS   
 ■ CLOSED STACK (B COLLECTION)   
 ■ MECHANICAL

The inviting new grade level entry at Locust Avenue will be a modern counterpoint to the formal grand stairs of Central's historic Olive Street entrance. Like interlocking fingers, the Library's new 21<sup>st</sup> century circulation routes join with its classic 20<sup>th</sup> century routes, effectively integrating its past with its future.



# Linking the Glorious Past with an Exciting Future



## LEGEND

COLLECTION	SPECIAL PUBLIC SPACE	ADMIN. / SUPPORT	RESTROOMS	CLOSED STACK (B COLLECTION)	MECHANICAL
------------	----------------------	------------------	-----------	-----------------------------	------------

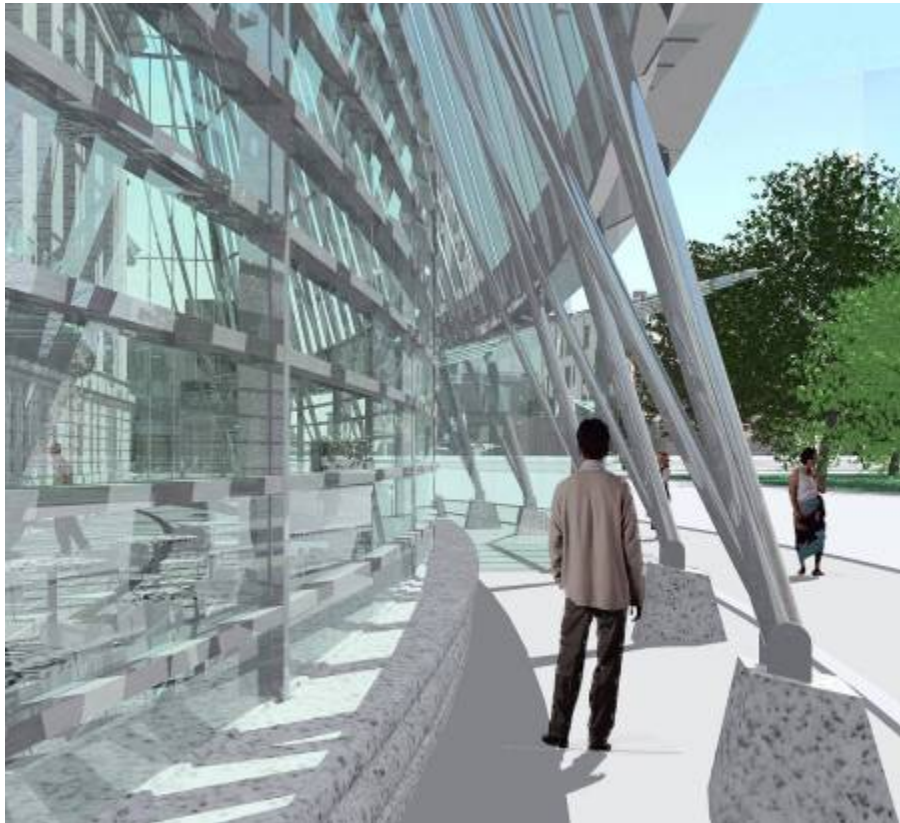
The plan is to renovate major parts of the basement, first and third floors for primarily new and exciting public service uses.

## An Exciting New Place for Saint Louis



View from north at dusk

## An Exciting New Place for Saint Louis



Locust Street sidewalk



New north entry



## An Exciting New Place for Saint Louis



New café winter garden and welcome desk

## An Exciting New Place for Saint Louis



View east towards Shell Building



## An Exciting New Place for Saint Louis



New grand stairway carved from old stack

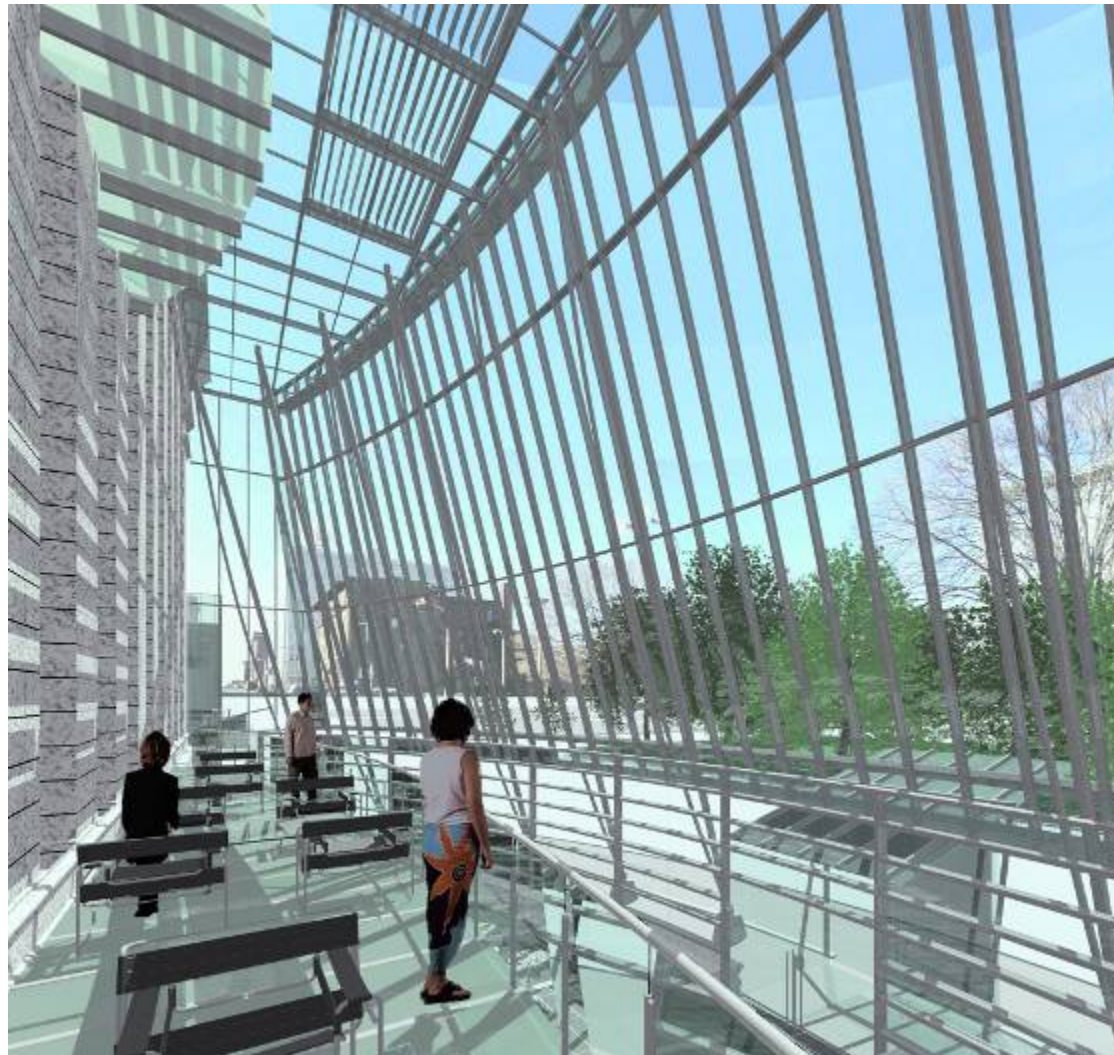


## An Exciting New Role for Tired, Old Space



Old stack transformed into new computer center

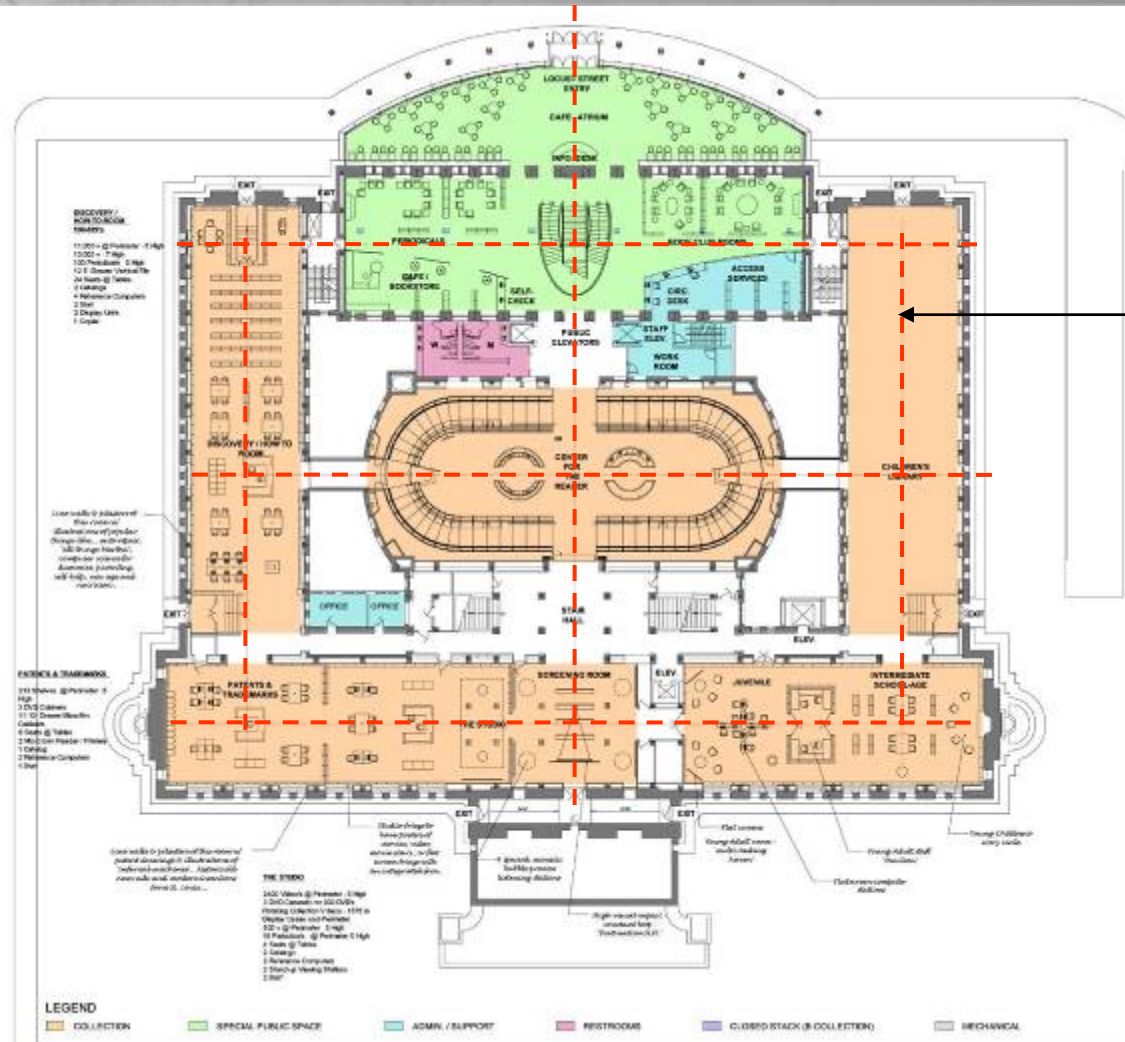
## Saint Louis from a Whole New Perspective



View from second floor atrium balcony



# Central Floor Plans – First Floor



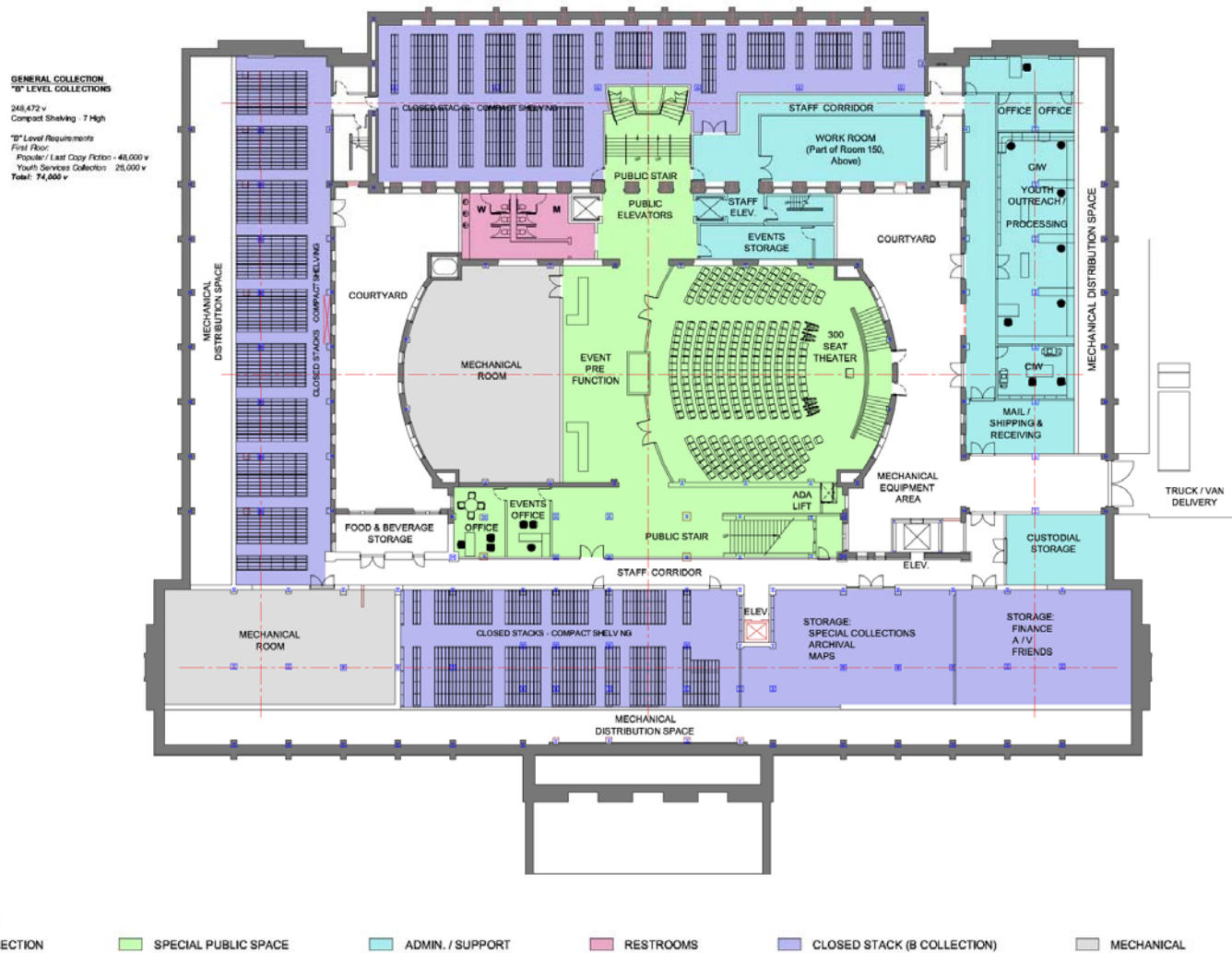
Expanding on Cass Gilbert's original circulation patterns

"Restoring historic spaces and preserving the overall integrity of the plan" – Dr. George Skarmneas, Hillier HP Director

This project will transform the most lackluster space in Central into an exciting new popular library and meeting place for folks of all ages and interests.

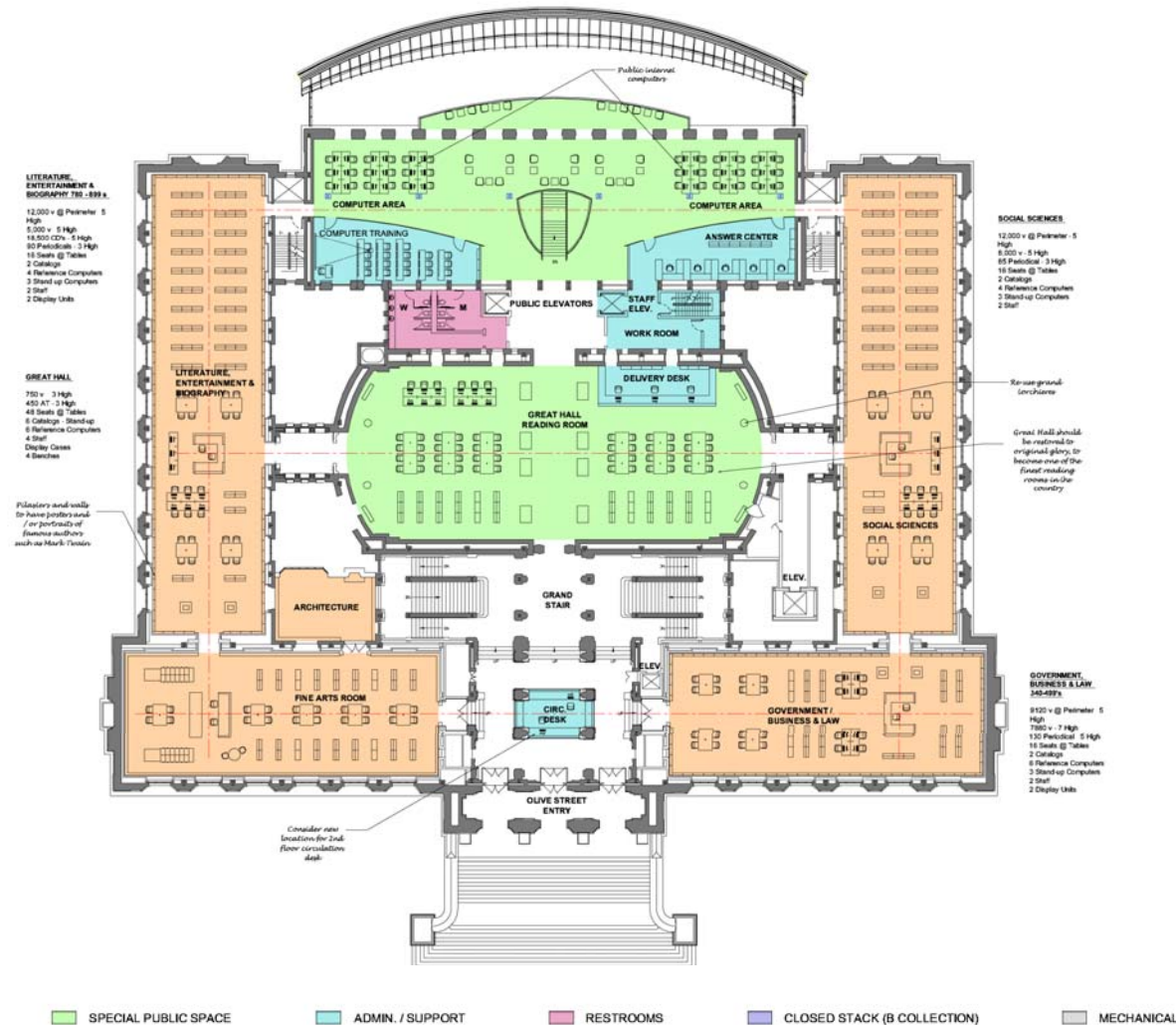


# Central Floor Plans – Lower Level



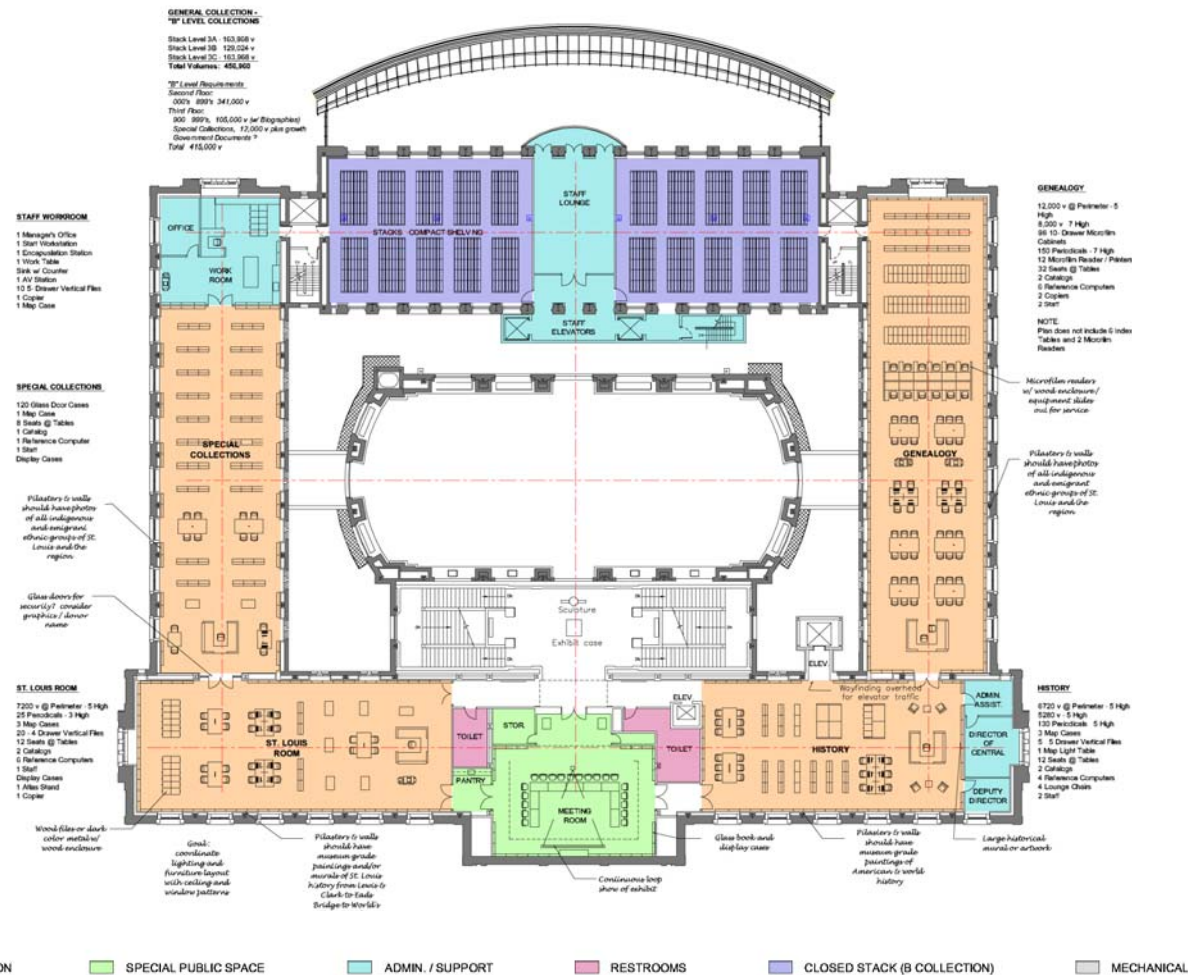
The theater will be an important new venue for programs that will enrich the experience for current patrons and draw many new visitors to the library every year.

# Central Floor Plans – Second Floor



The Second Floor restoration will honor Central's most treasured rooms. Adding a modern new state-of-the-art computer center will take the library's reference, research and training capabilities to a whole new level.

# Central Floor Plans – Third Floor



Except for a popular exhibit space, the Third Floor currently provides very little space for the public. The renovation will change this as old offices and meeting rooms are converted into the History, Special Collections, Genealogy and St. Louis Rooms.



